



## 2026 Dun Laoghaire Club Regattas Sailing Instructions (SI's)

### Regatta Dates:

[Dun Laoghaire Motor Yacht Club](#) - 6<sup>th</sup> & 7<sup>th</sup> June 2026

[National Yacht Club](#) - 13<sup>th</sup> June 2026

[Royal Irish Yacht Club](#) - 27<sup>th</sup> June 2026

[Royal St. George Yacht Club](#) - 4<sup>th</sup> July 2026

### Contents:

- Sailing Instructions - General – pages 2-3
- Addendum A – Course Area A (Cruisers) additional instructions – pages 4-6
- Addendum B – Course Area B (One-designs) additional instructions - page 7
- Addendum C – Course Area C (Dinghies) additional instructions – page 8





## 1. Organising Authority and Rules

- 1.1 The Organising Authority is the appropriate Yacht Club. (DMYC 6<sup>th</sup> & 7<sup>th</sup> June, NYC 13<sup>th</sup> June, RIYC 27<sup>th</sup> June, RSGYC 4<sup>th</sup> July).
- 1.2 This event will be governed by the current Racing Rules of Sailing (RRS).
- 1.3 Addendums A, B and C form part of these Sailing Instructions.

## 2. Changes to Sailing Instructions

- 2.1 Any change to the sailing instructions will be posted before 1000 on the day it will take effect, except that any change to the schedule of races will be posted by 2100 on the day before it will take effect.

## 3. Communications with Competitors

- 3.1 Notices to competitors will be posted on the official notice board located on the regatta section of the respective Club's website.
- 3.2 On Course Areas A & B, the race committee intends to monitor and communicate with competitors on the VHF radio channel listed on the respective Addendums.

## 4. Code of Conduct

- 4.1 [DP] Competitors and support persons shall comply with reasonable requests from race officials.

## 5. Signals Made Ashore

- 5.1 Signals made ashore may be displayed from the yard-arm of the Organising Authority and may be repeated on the yard arms of the other Dun Laoghaire Yacht Clubs and the Marina.
- 5.2 When Flag "AP" is displayed ashore, '1 minute' is replaced with 'not less than 60 minutes' in Race Signals AP.

## 6. Schedule of Races

- 6.1 Classes and start times are listed in the NOR and on Addendums A, B, and C.
- 6.2 To alert boats that a race or sequence of races will begin soon, the orange starting line flag will be displayed with one sound signal at least five minutes before a warning signal is made.

## 7. Class Flags

- 7.1 The Class Flags shall be as indicated on Addendums A, B and C.

## 8. Racing area

- 8.1 The racing area will be the waters of Dublin Bay, South of the shipping channel. Course area approximate start line positions are listed in the relevant addendums.

## 9. The Courses

- 9.1 There will be three course areas, A, B & C:
  - A. Courses 'round the cans' as defined in Addendum A. The Race Committee Vessel shall display a Red flag.
  - B. One Design Keelboat windward/leeward courses as defined in Addendum B. The Race Committee Vessel shall display a Green flag.
  - C. Dinghy windward/leeward or triangle courses as defined in Addendum C. The Race Committee Vessel shall display a Yellow flag.

## 10. Start

- 10.1 Boats racing in Course Area A will start as per RRS 26.
- 10.2 Boats racing in Course Areas B & C will start as per RRS 26 with the warning signal made 3 minutes before the starting signal (3 minutes sequence.)
- 10.3 The starting line is between the main mast or a staff displaying an orange flag on the race committee vessel at the starboard end and the course side of the port-end starting mark.
- 10.4 [DP] Boats whose warning signal has not been made shall avoid the starting area during the starting sequence for other races.
- 10.5 A boat that does not start within 10 minutes after her starting signal will be scored Did Not Start without a hearing. This changes RRS A5.
- 10.6 The Race Committee may, no later than three (3) minutes before the start of any class, adjust the starting line by moving the starting limit mark or the committee boat. This amends RRS 27.2.

## 11. Finish

- 11.1 The finishing line will be between the main mast or a staff of a Race Committee Vessel displaying a blue flag at the starboard end and a mark at the port end.
12. If a Race Committee Vessel is positioned at a mark or gate and displaying Flag F with sound signals, boats should round that mark or pass through the gate as normal, then proceed directly to the finish line, crossing the finish line from the direction of the mark or gate where Flag F was displayed. This is in addition to RRS 32.2.

## 13. Penalty System

- 12.1 For all classes except Flying Fifteens and Dinghies, RRS 44.1 is changed so that the 2-Turns Penalty is replaced by the 1-Turn Penalty.

## 14. Time Limits

- 13.1 Boats racing in Course Area A will be timed up to 20 minutes after the second boat to finish in their class. The second race will be timed up to 1700 hrs or up to 20 minutes after the second boat to finish.
- 13.2 Boats racing in Course Areas B and C will be timed up to 90 minutes after their valid start in each race or up to 20 minutes after the first boat to finish in their class, whichever is earlier.

## 14 Hearing Requests

- 14.1 The protest time limit is 60 minutes after the last boat on that course area finishes the last race of the day or the race committee signals no more racing today, whichever is later. The time will be posted on the official notice board.
- 14.2 Hearing request forms are available online at the relevant Regatta Racing Rules of Sailing.Org portal.
- 14.3 Notices will be posted no later than 30 minutes after the protest time limit to inform competitors of hearings in which they are parties or named as witnesses. Hearings will be held in the relevant Regatta Yacht Club, beginning at the time posted.
- 14.4 Appendix T Arbitration will apply. The Protest Committee will have arbitration hearings in approximately the order of receipt as soon as possible.



### 15 Safety Regulations

- 15.1 Boats shall keep clear of all commercial shipping entering and departing Dublin Port and cruise liner tenders operating between Dun Laoghaire and the anchorage in Dublin Bay.
- 15.2 Prohibited area – Dublin Port Channel: All boats are prohibited from entering the area bordered by the Poolbeg light, navigation buoys no. 6, 4, Dublin Bay Buoy, 1, 3, 5 and the North Bull light unless navigating to cross the channel.
- 15.3 All boats navigating to cross the Dublin Port Shipping channel should establish early contact with Dublin Port Vessel Traffic Service (VTS) and maintain a listening watch on VHF Channel 12.
- 15.4 [DP] Starting and finishing lines: A boat shall not cross the starting or finishing line of any other course.
- 15.5 Personal Buoyancy:  
All boats shall comply with the Department of Marine Statutory instruments S.I. No. 259 of 2004 Merchant Shipping (pleasure Craft) (lifejackets and operation) (safety) Regulation 2004.  
International Code flag “Y” may be displayed at any start in accordance with RRS 40 and if displayed then it is mandatory that all competitors wear approved personal buoyancy.  
However, it is strongly recommended by the Race Committee that all competitors wear approved personal buoyancy and a safety harness as appropriate.
- 15.6 Rescue priority: Patrol boats shall have right of way.

### 16 Prizes

First prize will be awarded in races in which there are two or more starters, and in addition second and third prizes will be awarded when there are 5 and 7 or more starters respectively.

### 17 Risk Statement

- 17.1 Rule 3 of the Racing Rules of Sailing states: ‘The responsibility for a boat's decision to participate in a race or to continue racing is hers alone.’ Sailing is by its nature an unpredictable sport and therefore inherently involves an element of risk. By taking part in the event, each competitor agrees and acknowledges that:
- (a) They are aware of the inherent element of risk involved in the sport and accept responsibility for the exposure of themselves, their crew and their boat to such inherent risk whilst taking part in the event;
  - (b) They are responsible for the safety of themselves, their crew, their boat and their other property whether afloat or ashore;
  - (c) They accept responsibility for any injury, damage or loss to the extent caused by their own actions or omissions;
  - (d) Their boat is in good order, equipped to sail in the event and they are fit to participate;
  - (e) The provision of a race management team, patrol boats and other officials and volunteers by the event organizer does not relieve them of their own responsibilities;
  - (f) The provision of patrol boat cover is limited to such assistance, particularly in extreme weather conditions, as can be practically provided in the circumstances;
  - (g) It is their responsibility to familiarise themselves with any risks specific to this venue or this event drawn to their attention in any rules and information produced for the venue or event and to attend any safety briefing held for the event;

### 18 Insurance

- 18.1 Each participating boat shall be adequately insured, with cover of at least €3m against third party claims.

#### Tide Information – Regattas 2026:

##### High Water - Dun Laoghaire:

<b>6th June:</b>	<b>16:39 hrs - 3.4m</b>
<b>7th June:</b>	<b>17:30 hrs – 3.3m</b>
<b>13th June:</b>	<b>10:31 hrs – 3.9m</b>
<b>27th June:</b>	<b>11:02 hrs - 3.6m</b>
<b>4th July:</b>	<b>15:22 hrs – 3.6m</b>

**PLEASE NOTE THESE SAILING INSTRUCTION ARE COMMON TO THE FOLLOWING CLUB  
REGATTAS**

Dun Laoghaire Motor Yacht Club 6<sup>th</sup> & 7<sup>th</sup> June, National Yacht Club 13<sup>th</sup> June, Royal Irish  
Yacht Club 27<sup>th</sup> June, Royal St. George Yacht Club 4<sup>th</sup> July



## Courses for Cruisers 0, 1, 2, Beneteau 31.7, Cruisers 3, Cruisers 4A / 4B / 5A / 5B

### Race Committee Vessel Identification: Red flag. Channel 74

#### A1. The Course

- 1.1 The course to be sailed will be signaled by the display of letter(s) and number(s) on the Race Committee Vessel, as defined on the 'Course Card A' included in this addendum. The course will be displayed for at least 3 minutes before and at least 1 minute after the start of each class, and may also be announced on VHF radio. This changes RRS 27.1.
- 1.2 The display of a letter followed by a number (e.g. A1) signals that the course is the corresponding course in Course Card A. The black letters in Course Card A represent marks as shown on the Chart of DBSC Marks in this addendum.
- 1.3 If there is a number preceding the letter, the course shall be repeated that number of times. For example, the display of 2A3 means that course A3 shall be sailed twice: E C K E C K.
- 1.4 The display of two letters and two numbers (e.g. A3B4) signals that the course is a combination of those two courses (in the example, A3 followed by B4, or E C K F K).
- 1.5 For Cruisers 4 and 5, two numbers may follow the course letter (e.g. A23). In that case, Cruisers 4A and 5A shall sail the course designated by the first number (in the example, A2) and Cruisers 4B and 5B shall sail the course designated by the second number (in the example, A3). If there is a number preceding the letter, the designated course shall be repeated that number of times, as above.
- 1.6 All marks shall be rounded to port in the order listed.

#### A2. Marks

- 2.1 Marks of the course will be DBSC racing marks in Dublin Bay, in the approximate positions shown in the Chart of DBSC Marks and the DBSC Marks, Bearing and Distance Table included in this addendum.

#### A3. Starting & Finishing Lines

- 3.1 The race start line will be approximately North of Dun Laoghaire Harbour.
- 3.2 The race finish line shall be approximately positioned to weather of the last mark of the course (unless shortened).

#### A4. Classes, Class Flags and Scheduled Start Times

- 4.1 The scheduled time of the first warning signal for the first race is 1155.
- 4.2 The classes, class flags and scheduled start times are as follows:

Class	Class Flag	Scheduled Start Times
Cruiser 0	No. 0	1200
Cruiser 1	No. 1	1205
Cruiser 2	No. 2	1210
Beneteau 31.7	No. 9	1215
Cruisers 3	No. 3	1220
Cruisers 4A / 4B / 5A / 5B	No. 4 / No. 5	1225

- 4.3 Race 2 will start as soon as possible after the finish of the first race.

# DUN LAOGHAIRE COMBINED CLUBS

## Course Card A



# 2026

### A NORTH 000

- 1 E D B D B D C K
- 2 E D B D C K
- 3 E C K
- 4 E K

### D ENE 066.5

- 1 G F C F C F D B
- 2 G F C F D B
- 3 G D B
- 4 G B

### G SE 135

- 1 J G E G E G F D
- 2 J G E G F D
- 3 J F D
- 4 J D

### K SSW 202.5

- 1 B K F K F K G E
- 2 B K F K G E
- 3 B G E
- 4 B E

### N WEST 270

- 1 C B J B J B K G
- 2 C B J B K G
- 3 C K G
- 4 C G

### R NNW 337.5

- 1 E D K D K D B J
- 2 E D K D B J
- 3 E B J
- 4 E J

### B NNE 022.5

- 1 F E B E B E C K
- 2 F E B E C K
- 3 F C K
- 4 F K

### E EAST 090

- 1 G F D F D F E C
- 2 G F D F E C
- 3 G E C
- 4 G C

### H SSE 157.5

- 1 K J E J E J F D
- 2 K J E J F D
- 3 K F D
- 4 K D

### L SW 225

- 1 B K G K G K G F
- 2 B K G K J F
- 3 B J F
- 4 B F

### P WNW 292.5

- 1 D C J C J C K G
- 2 D C J C K G
- 3 D K G
- 4 D G

### C E 045

- 1 F E C E C E D B
- 2 F E C E D B
- 3 F D B
- 4 F B

### F ESE 112.5

- 1 J G D G D G E C
- 2 J G D G E C
- 3 J E C
- 4 J C

### J SOUTH 180

- 1 K J F J F J G E
- 2 K J F J G E
- 3 K G E
- 4 K E

### M WSW 247.5

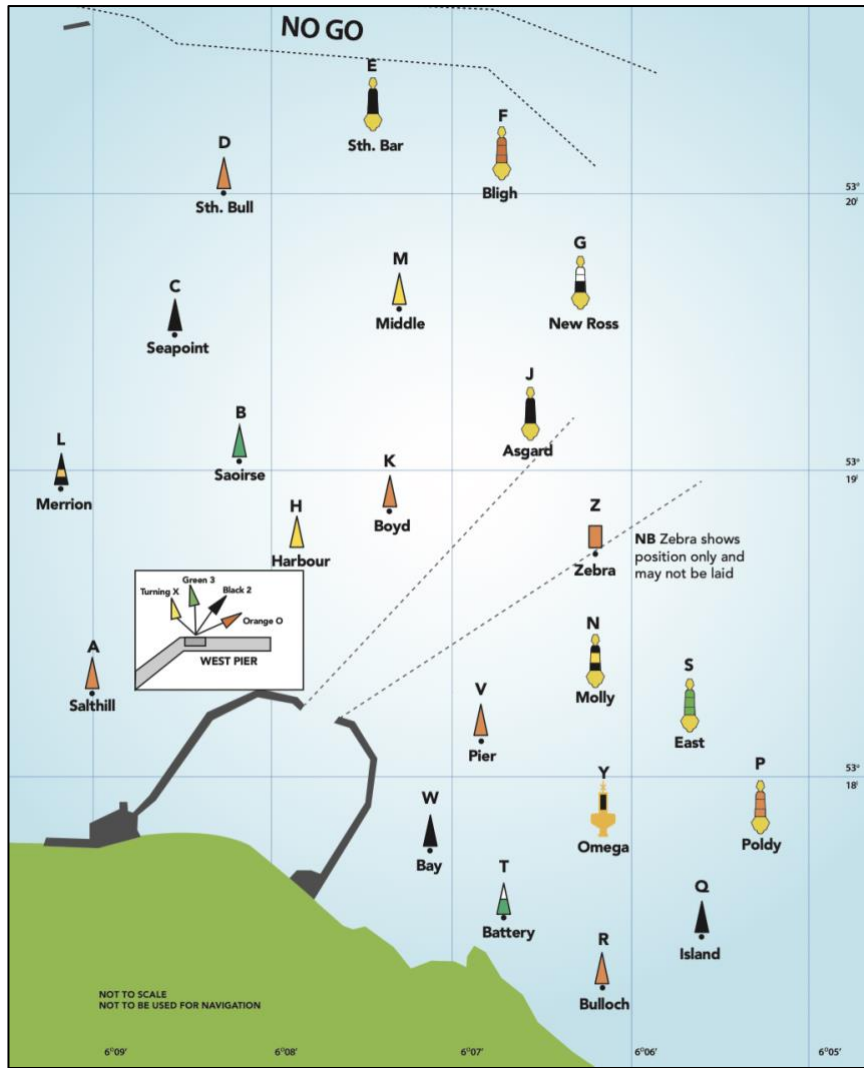
- 1 C B G B G B J F
- 2 C B G B J F
- 3 C J F
- 4 C F

### Q NW 315

- 1 D C K C K C B J
- 2 D C K C B J
- 3 D B J
- 4 D J

**PLEASE RETAIN THIS CARD FOR DMYC, NYC, RIYC & RSGYC 2026 REGATTAS**

# Chart of DBSC Marks



Position		DBSC Marks, Bearings and Distances																Bearings in Black, relative to True North				Mark positions may vary slightly. All figures are approximate.					
Lat N 53°+		V 1 07/04/2026																Distances in Red, in NM				Warning: Some direct paths are obstructed.					
min	From	To:	A	B	C	D	S.Bull	S.Bar	Bligh	N.Ross	Harb'r	Asgard	Boyd	Merrion	Middle	Molly	Orange	Poldy	Island	Bulloch	East	Battery	Pier	Bay	Turning	Omega	Green
18.36	A	Salthill	-	0.83	1.15	1.69	2.08	2.20	2.03	0.83	1.64	1.09	0.52	1.50	1.63	0.65	2.22	2.24	2.01	1.99	1.64	1.32	1.30	0.40	1.75	0.49	
19.02	B	Saoirse	218	-	330	355	019	039	062	141	085	110	256	037	124	168	126	136	146	120	149	140	154	191	137	182	
8.15	B	Saoirse	0.83	-	0.53	0.98	1.27	1.37	1.25	0.36	0.95	0.50	0.60	0.66	1.34	0.65	2.04	2.20	2.11	1.71	1.75	1.21	1.43	0.60	1.69	0.60	
19.48	C	Seapoint	192	150	-	019	043	062	085	146	107	131	207	084	131	160	131	138	146	127	149	143	153	172	140	167	
8.6	C	Seapoint	1.15	0.53	-	0.55	1.01	1.28	1.38	0.89	1.27	0.97	0.68	0.67	1.83	1.17	2.53	2.72	2.64	2.19	2.28	1.74	1.97	1.06	2.21	1.09	
20	D	South Bull	194	175	199	-	067	085	109	166	131	154	204	133	145	172	142	147	155	140	158	155	162	181	151	177	
8.3	D	South Bull	1.69	0.98	0.55	-	0.55	0.96	1.26	1.30	1.37	1.28	1.22	0.67	2.10	1.64	2.79	3.02	3.01	2.42	2.67	2.09	2.38	1.57	2.54	1.59	
20.22	E	South Bar	206	199	223	247	-	107	132	187	154	178	217	182	160	189	153	158	165	153	170	170	175	197	163	194	
7.45	E	South Bar	2.08	1.27	1.01	0.55	-	0.47	0.93	1.49	1.23	1.37	1.67	0.67	2.06	1.86	2.69	2.99	3.04	2.32	2.74	2.15	2.50	1.87	2.55	1.86	
20.08	F	Bligh	219	219	242	265	287	-	154	206	175	198	230	221	172	203	161	166	173	162	179	182	186	211	173	208	
6.7	F	Bligh	2.20	1.37	1.28	0.96	0.47	-	0.54	1.48	0.97	1.29	1.88	0.71	1.82	1.85	2.39	2.71	2.82	2.01	2.56	1.98	2.36	1.92	2.32	1.88	
19.6	G	New Ross	232	242	265	289	312	334	-	226	198	220	247	266	179	218	163	169	178	166	186	192	194	226	179	223	
6.3	G	New Ross	2.03	1.25	1.38	1.26	0.93	0.54	-	1.23	0.51	0.99	1.83	0.71	1.32	1.56	1.86	2.19	2.32	1.49	2.09	1.53	1.93	1.69	1.82	1.63	
18.74	H	Harbour	243	321	326	346	007	025	046	-	063	065	280	012	117	194	123	135	147	115	151	139	158	228	136	217	
7.77	H	Harbour	0.83	0.36	0.89	1.30	1.49	1.48	1.23	-	0.81	0.26	0.82	0.83	1.00	0.37	1.69	1.84	1.75	1.38	1.40	0.85	1.09	0.46	1.33	0.41	
19.11	J	Asgard	243	265	287	311	334	355	018	243	-	242	261	309	169	228	152	161	173	151	182	189	193	237	172	234	
6.56	J	Asgard	1.64	0.95	1.27	1.37	1.23	0.97	0.51	0.81	-	0.55	1.55	0.70	0.85	1.09	1.46	1.76	1.85	1.09	1.59	1.02	1.42	1.26	1.34	1.19	
18.85	K	Boyd	243	290	311	334	358	018	040	245	062	-	272	355	131	215	131	143	155	124	162	157	172	234	148	228	
7.37	K	Boyd	1.09	0.50	0.97	1.28	1.37	1.29	0.99	0.26	0.55	-	1.05	0.70	0.87	0.57	1.56	1.76	1.73	1.22	1.40	0.81	1.13	0.72	1.27	0.65	
18.88	L	Merrion	172	076	027	024	037	050	067	100	081	092	-	056	109	125	115	124	132	109	133	120	134	134	122	130	
9.12	L	Merrion	0.52	0.60	0.68	1.22	1.67	1.88	1.83	0.82	1.55	1.05	-	1.19	1.80	0.87	2.46	2.55	2.39	2.18	2.01	1.57	1.67	0.65	2.05	0.73	
19.55	M	Middle	217	217	264	313	002	041	086	192	129	175	236	-	151	193	144	152	161	142	166	165	173	205	157	200	
7.48	M	Middle	1.50	0.66	0.67	0.67	0.67	0.71	0.71	0.83	0.70	0.70	1.19	-	1.46	1.20	2.13	2.39	2.40	1.76	2.09	1.50	1.83	1.23	1.92	1.21	
18.28	N	Molly	273	304	311	325	340	352	359	297	349	311	289	331	-	276	131	153	176	109	196	242	222	277	177	277	
6.28	N	Molly	1.63	1.34	1.83	2.10	2.06	1.82	1.32	1.00	0.85	0.87	1.80	1.46	-	0.99	0.70	0.93	1.00	0.38	0.79	0.38	0.74	1.24	0.50	1.14	
18.38	O	Orange Start	268	348	340	352	009	023	038	014	048	035	305	013	096	-	110	124	136	099	139	113	143	281	121	283	
7.92	O	Orange Start	0.65	0.65	1.17	1.64	1.86	1.85	1.56	0.37	1.09	0.57	0.87	1.20	0.99	-	1.61	1.68	1.52	1.36	1.15	0.70	0.81	0.26	1.17	0.16	
17.82	P	Poldy	284	306	311	322	333	341	343	303	332	311	295	324	311	290	-	196	220	334	248	288	265	289	265	290	
5.4	P	Poldy	2.22	2.03	2.53	2.78	2.69	2.39	1.86	1.69	1.46	1.56	2.46	2.13	0.70	1.61	-	0.39	0.71	0.38	0.80	0.90	1.02	1.86	0.50	0.76	
17.45	Q	Island	294	316	318	328	338	346	349	315	341	323	304	332	333	304	016	-	244	355	276	311	287	301	310	302	
5.58	Q	Island	2.24	2.20	2.72	3.02	2.99	2.71	2.19	1.84	1.76	1.76	2.55	2.39	0.93	1.68	0.39	-	0.39	0.71	0.64	0.99	0.95	1.92	0.51	1.83	
17.28	R	Bulloch	302	326	326	335	345	353	358	327	353	335	312	341	356	316	040	064	-	018	310	334	309	311	355	313	
6.16	R	Bulloch	2.01	2.11	2.64	3.01	3.04	2.82	2.32	1.75	1.85	1.73	2.38	2.40	1.00	1.52	0.71	0.39	-	0.93	0.37	0.92	0.72	1.74	0.50	1.66	
18.16	S	East	276	300	307	320	333	342	346	295	331	304	289	322	289	279	154	175	198	-	222	265	243	280	221	280	
5.68	S	East	1.99	1.71	2.19	2.42	2.32	2.01	1.49	1.38	1.09	1.22	2.18	1.76	0.38	1.36	0.38	0.71	0.93	-	0.86	0.70	0.95	1.61	0.50	1.52	
17.52	T	Battery	301	329	329	338	350	359	006	331	002	342	313	346	016	318	068	096	130	042	-	348	307	312	043	314	
6.638	T	Battery	1.64	1.75	2.28	2.67	2.74	2.56	2.09	1.39	1.59	1.40	2.01	2.09	0.79	1.15	0.80	0.64	0.37	0.86	-	0.59	0.35	1.36	0.36	1.29	
18.1	V	Pier	281	320	323	335	350	002	012	319	009	337	300	345	062	293	108	131	154	085	168	-	203	290	131	292	
6.84	V	Pier	1.32	1.21	1.73	2.09	2.15	1.98	1.53	0.85	1.02	0.81	1.57	1.50	0.38	0.70	0.91	0.99	0.92	0.70	0.59	-	0.40	0.96	0.49	0.86	
17.73	W	Bay	299	334	333	342	355	006	014	338	013	352	314	353	042	323	085	107	129	063	127	023	-	313	085	317	
7.1	W	Bay	1.30	1.43	1.97	2.38	2.50	2.36	1.93	1.09	1.42	1.13	1.67	1.83	0.74	0.81	1.02	0.95	0.72	0.95	0.35	0.40	-	1.02	0.52	0.94	
18.43	X	Turning	260	011	352	001	017	031	046	048	057	054	314	025	097	101	109	121	131	100	132	110	133	-	117	098	
8.34	X	Turning	0.40	0.60	1.06	1.57	1.87	1.92	1.69	0.46	1.26	0.72	0.65	1.23	1.24	0.26	1.86	1.92	1.74	1.61	1.36	0.96	1.02	-	1.42	0.10	
17.78	Y	Omega	289	317	320	331	343	353	359	316	352	328	303	337	357	301	085	130	175	041	223	311	265	297	-	299	
6.23	Y	Omega	1.75	1.69	2.21	2.54	2.55	2.32	1.82	1.33	1.34	1.27	2.05	1.92	0.50	1.17	0.50	0.51	0.50	0.50	0.36	0.49	0.52	1.42	-	1.33	



### Courses for SB20, Sportboat, Dragon, Flying Fifteen, Ruffian 23, Shipman, Beneteau 21, Dublin Bay 21, Glen and Mermaid Classes

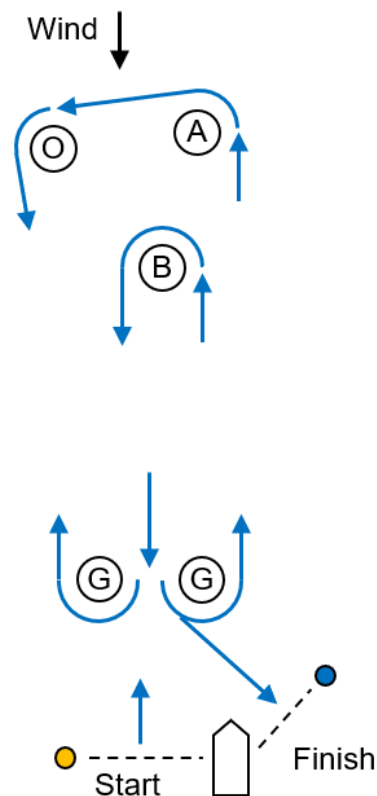
#### Race Committee Vessel identification: Green flag. Channel 72.

#### B1. The Course

- 1.1 The courses will be Windward/Leeward courses with two windward marks A and B, as shown in the diagram on the right (not to scale). No offset mark will be set for windward mark B.
- 1.2 All marks shall be rounded to port, except when sailing through the gate (G-G).
- 1.3 The course to be sailed will be signaled by displaying a board with the course type, A or B, followed by a board displaying the number of rounds to be sailed, as shown in the table below.

Signal	Mark Rounding Order
A1	Start – A – O – Gate – Finish
A2	Start – A – O – Gate – A – O – Gate – Finish
A3	Start – A – O – Gate – A – O – Gate – A – O – Gate – Finish
B1	Start – B – Gate – Finish
B2	Start – B – Gate – B – Gate – Finish
B3	Start – B – Gate – B – Gate – B – Gate – Finish

- 1.4 The boards will be displayed on the race committee starting vessel from approximately 2 minutes before the start of each class to approximately 1 minute after the start of each class and it may be broadcast on the designated VHF channel. This changes RRS 27.1.
- 1.5 While every effort will be made to lay the offset mark (O), in the event that this is not in position, boats shall, after rounding the windward mark to port, sail directly to the leeward gate or mark.
- 1.6 While every effort will be made to set a leeward gate, in the event that it is missing, then a single leeward mark shall be rounded to port.



#### B2. Marks

- 2.1 Marks of the course shall be large inflatable marks. The inner windward mark (B on Course B) will be an inflatable mark with a white band.

#### B3. Classes, Class Flags and Scheduled Start Times

- 3.1 The scheduled time of the first warning signal for the first race is 11:57.
- 3.2 The classes, class flags and scheduled start times are as follows:

Class	Class Flag	Start
SB20	No. 7	12:00
Sportboat / Dragon	3 <sup>rd</sup> Sub / D	12:03
Flying Fifteen	Naval 6	12:06
Ruffian 23/ Shipman	Q / W	12:09
Beneteau 21	No. 4	12:12
DB21/Glen/Mermaid	B/K	12:15

- 3.3 The race start line will be approximately East of Dun Laoghaire Harbour.
- 3.4 Race 2 will commence as soon as possible after the conclusion of Race 1.
- 3.5 The starting sequence for subsequent races may differ to the starting sequence for Race 1 should the Race Committee decide to start a race for some classes whilst others are still racing the previous race.

#### B4. CHANGE OF THE NEXT LEG OF THE COURSE

- 4.1 To change the next leg of the course, the race committee will move the original mark or the finishing line to a new position.

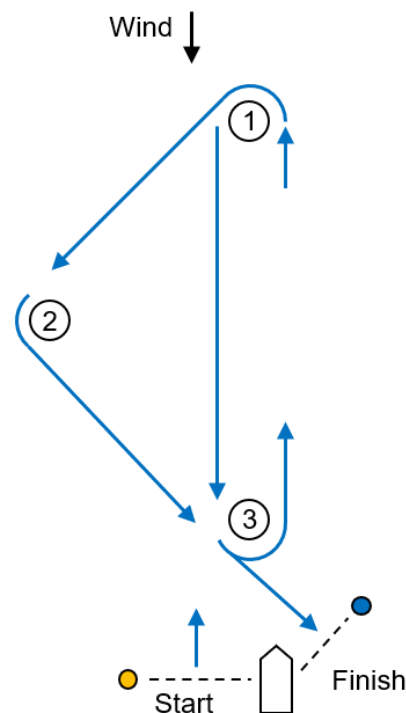


### Schedule for Melges 15, Fireball, ILCA 7, ILCA 6, RS Aero and PY Dinghy Classes

#### Race Committee Vessel identification: Yellow flag.

#### C1. The Course

- 1.1 Board 'W' with numeral board will indicate Windward Leeward course and number of rounds.
- 1.2 Board 'T' with numeral board will indicate Windward Leeward Triangle and number of rounds.
- 1.3 The letter and number boards will be shown on the race committee starting vessel from approximately 2 minutes before the start of each class to approximately 1 minute after the start of each class.
- 1.4 The diagram on the right shows the layout of the marks (not to scale). All marks shall be rounded to port, except that on the last round, mark 3 need only be passed to port while sailing to the finishing line.
- 1.5 The marks to be rounded and order of rounding for each course are shown in the table below.



Signal	Mark Rounding Order
<b>T1</b>	Start – 1 – 2 – 3 – Finish
<b>T2</b>	Start – 1 – 2 – 3 – 1 – 3 – Finish
<b>T3</b>	Start – 1 – 2 – 3 – 1 – 3 – 1 – 2 – 3 – Finish
<b>W1</b>	Start – 1 – 3 – Finish
<b>W2</b>	Start – 1 – 3 – 1 – 3 – Finish
<b>W3</b>	Start – 1 – 3 – 1 – 3 – 1 – 3 – Finish

#### C2. Marks

- 2.1 Marks of the course shall be large inflatable marks.

#### C3. Classes, Class Flags and Schedules Start Times

- 3.1 The scheduled time of the first warning signal for the first race is 11:27.
- 3.2 The classes, class flags and scheduled start times for the first race are as follows:

Class	Class Flag	Start Signal
Melges 15	Melges Class Flag	11:30
Fireball	No. 1	11:33
ILCA 7	White Laser Flag	11:36
ILCA 6	Green Laser Flag	11:39
RS Aero (PY)	RS Aero Class Flag	11:42
PY Dinghies	E	11:45

- 3.3 The starting order for subsequent races will be the same sequence as the first race and will start as soon as possible after the last finisher of the previous race.
- 3.4 The race start line will be approximately West of Dun Laoghaire Harbour.

#### C4. Change of the Next Leg of the Course

- 4.1 To change the next leg of the course, the race committee will move the original mark or the finishing line to a new position.