

Dun Laoghaire Motor Yacht Club

West Pier, Dun Laoghaire, County Dublin
01 280 1371 www.dmyc.ie



DMYC Kish Challenge – Race Option

Sunday 5 October 2025

General Information & Sailing Instructions

General Information

Temporary Membership

All helms and crews competing in the race will be temporary members of the Dun Laoghaire Motor Yacht Club (DMYC) on the day of the race and will be bound by the rules of the DMYC. The DMYC reserves the right to withdraw such temporary membership.

Acknowledgements

The Flag Officers and Committee of the DMYC wish to express their gratitude for the assistance rendered by: Irish Sailing; Dublin Bay Sailing Club (DBSC); Dublin Port Company; Irish Lights; Dun Laoghaire Harbour Master; Afloat magazine and the other Dun Laoghaire Yacht Clubs. We also thank Leinster Boats for their generous sponsorship of this event.

Information for Competitors

High water at Dublin (North Wall) on Sunday 5 October is at 11:09 local time, height 3.85 m. The next low water is at 16:38, height 0.85 m.

Results will be posted on www.dmyc.ie

The Prizegiving will take place in the DMYC at approximately 18:00 on the day of the Race.

Sailing Instructions

1. Rules

1.1 This event will be governed by the Racing Rules of Sailing 2025-2028 (RRS), the Prescriptions of Irish Sailing, the Notice of Race, these Sailing Instructions (SIs) and any amendments thereto. In the event of any conflict between the Notice of Race and the Sailing Instructions, the Sailing Instructions shall prevail.

1.2 Racing Rules will be changed as follows:

Rule 32 – shortening course	
Rule 35 – time limit and scores;	Race Signals - AP;
Appendix A5 – scores determined by race committee.	

1.3 The Race Committee reserves the right to inspect any entered boat, and to cancel the entry of a boat with any unusual arrangement in hull, rig, sails, ballast, or equipment that the Race Committee considers to be a potential hazard, or an attempt to violate or circumvent the intent of this document.

1.4 Boats participating in the Kish Challenge cruise will be sailing on the same course but starting later. Those boats will sail under the International Regulations for Preventing Collisions at Sea (IRPCAS or COLREGs). RRS Part 2 states that when a boat sailing under RRS meets a boat sailing under IRPCAS, she shall comply with IRPCAS. Any boat flying a national ensign at the stern should be assumed to be sailing under IRPCAS.

2. Notices to Competitors

Notices to Competitors will be published on the DMYC web site: www.dmyc.ie

3. Changes to Sailing Instructions

Any change to the Sailing Instructions will be published before 09:00 on the day of the event, except that any change to the race schedule will be published before 20:00 on the day before the event.

4. Signals made Ashore

4.1 Signals made ashore will be displayed from the yardarm of the DMYC. Such signals may also be announced on VHF Channel 68.

4.2 If flag AP is displayed ashore, meaning that racing is postponed, the warning signal will be made not less than 45 minutes after AP is removed. This changes RRS Race Signals.



5. Schedule of Races, Class Flags

Racing is scheduled for Sunday 5 October 2025, with the warning signal at 10:55 local time, and the start at 11:00. There will be one race, with all boats starting together, using class flag Q. Note that there is no requirement for boats to display this class flag.



6. Racing Area

The race will take place in the vicinity of Dublin Bay, extending east to the Kish lighthouse and south into Killiney Bay. Start and finish will be at the DBSC hut, West Pier, Dun Laoghaire.

7. Courses and Marks

7.1 A letter board indicating the course in use will be displayed on the DBSC hut before the warning signal. The course in use may also be announced on VHF, Channel 68.

7.2 The intended course is around the Kish Lighthouse, signalled by the letter K. To keep the race away from commercial traffic, competitors must pass South of the Muglins island on the way to and from the Kish lighthouse. Details are in Appendix A.

7.3 If weather conditions are not suitable for the intended course, an alternative mark may be used. This will be a fixed mark: either a navigation mark or an island. The marks that may be used are listed in Appendix B, with their locations and their identification letters.

8. Prohibited Areas (Obstructions under RRS)

8.1 Boats shall not enter Dublin Port channel: the area bounded by the Poolbeg light, navigation buoys 6 and 4, Dublin Bay buoy, navigation buoys 1, 3 and 5 and the North Bull light.

8.2 Boats shall not enter the region bounded by the Dublin Bay buoy, the South Burford mark, the North Burford mark and the Baily lighthouse. Racing boats must not interfere with the passage of commercial vessels to or from the North Burford or South Burford Traffic Separation Scheme.

8.3 Boats shall not enter the swimming areas at Seapoint and Sandycove marked with yellow buoys.

8.4 Boats, while racing, shall not pass between Dalkey Island and the mainland.

8.5 Boats shall not cross the start or finish line of any other race.

9. The Start

9.1 The start will be at the DBSC hut, on the west pier of Dun Laoghaire harbour. The start line will be defined by a transit formed by bringing in line the two triangles on top of the hut. The limit mark will be a striped inflatable mark laid a suitable distance from the DBSC Hut.

9.2 To start, boats shall cross the start line leaving the limit mark to port and the DBSC hut to starboard.

9.3 The start sequence will be in accordance with RRS 26.

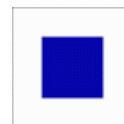
10. The Finish

The finish will be at the DBSC hut. The finish line will be between an orange pillar mark (approximately North-East of the hut) and an orange line painted on the northeast corner of the hut. Boats shall cross the finishing line leaving the orange mark to starboard and the hut to port.

11. Shortening Course

11.1 The course may be shortened at a mark of the course in accordance with RRS 32.2.

11.2 Alternatively, a finish line may be laid along the rhumb line between a mark of the course and the DBSC hut. This finish line would be between an inflatable mark and a staff on a vessel flying the DMYC burgee and flag S. The fact of the shortened course and the approximate location of the new finish line would be announced on VHF Channel 68. Boats should cross the new finish line in the direction of the rhumb line from the previous mark. This extends RRS 32.



12. Time Limit

12.1 If no boat has rounded the designated mark within 3 hours of the start, the race will be abandoned.

12.2 The time limit is 17:00. Any boat that has not finished by that time will be scored DNF without a hearing. This changes RRS 35 and A5.

13. Commercial Traffic

13.1 The Race Committee will disqualify, without a hearing, any boat that impedes the passage of a vessel that can navigate safely only within a narrow channel or fairway, or a vessel that has limited manoeuvrability. Such disqualification may be based on observation of the Race Committee or report from the Coast Guard, vessel operator, Dublin Port Company or other civil authority. This changes RRS A5.

13.2 Competing boats shall respect the traffic separation zones in Dublin Bay. Any traffic separation zone shall be crossed by the fastest route, while giving way to commercial traffic.

14. Communication

14.1 Any boat that retires from the race or that does not finish within the time limit should inform the Race Committee on VHF Channel 68. Other boats are requested to relay VHF transmissions if direct communication with the Race Committee is impossible.

14.2 Communication with Dublin Vessel Traffic Service (VTS) (Channel 12) or with commercial vessels about their movements shall not be construed as outside assistance under RRS 41.

15. Protests

15.1 Protest forms are available from the DMYC Race Office. Protests shall be delivered there as soon as possible after racing, and no later than one hour after the last boat has finished the race. The protesting boat is requested to inform the protested boat(s) as soon as possible.

15.2 Protest hearings will be scheduled by the Rear-Commodore (Sailing) of the DMYC and will be held at the DMYC as soon as possible after racing.

16. Handicapping and Prizes

16.1 ECHO Standard handicaps, or equivalent, will be used to calculate corrected times. The race committee will assign a fair handicap to boats where necessary.

16.2 The Kish perpetual trophy will be awarded to the boat with the lowest corrected time. Other prizes will be awarded to the three boats with the lowest corrected times.

16.3 Additional prizes may be awarded for the first Ruffian, the first Shipman and the best result by a crew of two (excluding boats that normally race with a crew of two), if justified by the number of entries in those categories. The decision to award prizes remains exclusively with the DMYC and their sponsor, Leinster Boats.

17. Disclaimer of Liability

Sailing is an activity that has an inherent risk of damage and injury. Competitors in these races are participating entirely at their own risk. See RRS 3, Decision to Race. Dun Laoghaire Motor Yacht Club (DMYC), its race committee and other volunteers, Leinster Boats, Dublin Bay Sailing Club (DBSC), Dublin Port Company and Dun Laoghaire Harbour Company will not be responsible for damage to any boat or other property, nor for injury to any competitor, including death, sustained as a result of participation in this event. By participating in this event, each competitor agrees to release DMYC from any and all liability associated with such participation to the fullest extent permitted by law.

18. Insurance

Each participating boat shall be insured with valid third-party liability insurance, with minimum cover €3.0 million.

19. Safety

19.1 A personal flotation device (PFD) shall be worn by all crew members on competing boats. A lifejacket of at least 100 N buoyancy, with a crotch strap, is recommended.

19.2 Competing boats must have a working marine VHF radio for safety and racing purposes, capable of operating on VHF Channels 12 and 68.

19.3 Competing boats must carry an anchor and a towing rope.

19.4 Competing boats must carry at least a basic First Aid kit.

Contact Points

Contact	VHF	Phone
Coastguard - Emergency	Ch 16	999 or 112
Dublin Port VTS	Ch 12	01 887 6000
Dun Laoghaire Harbour	Ch 14	01 280 1130
Dun Laoghaire Marina	Ch 37A (M1 or 1037)	01 202 0040
Dun Laoghaire Motor Yacht Club	Ch 68 or 37A	01 280 1371
Dublin Coastguard (non-emergency)	Ch 03	01 662 0922



Appendix A – Kish Lighthouse Course – letter K

The marks should be rounded in the order and in the direction shown in the table below. The chart shows the approximate course.

Mark	Round	Latitude	Longitude	Bearing	Distance
Start		53° 18.3' N	6° 8.07' W		
Muglins	to Port	53° 16.524' N	6° 04.579' W	134°M	2.8 NM
Kish Light	to Port	53° 18.65' N	5° 55.542' W	069°M	5.8 NM
Muglins	to Starboard	53° 16.524' N	6° 04.579' W	249°M	5.8 NM
Finish		53° 18.3' N	6° 8.07' W	314°M	2.8 NM

Navigation Notes

The Muglins coordinates are for the lighthouse – not to be used as a waypoint! The direct path from the start to the Muglins is obstructed – the bearing given is from the corner of the East Pier. Similarly for the bearing to the finish. The distances allow for rounding the pier.

There are hazards in the sound between the Muglins and Dalkey Island, and at the South end of the Muglins – refer to a nautical chart or keep well clear of both islands.

The course passes over the North end of the Kish bank. Deep-draft boats should take care! The North Kish Buoy is not a mark of the course and may be passed on either side.

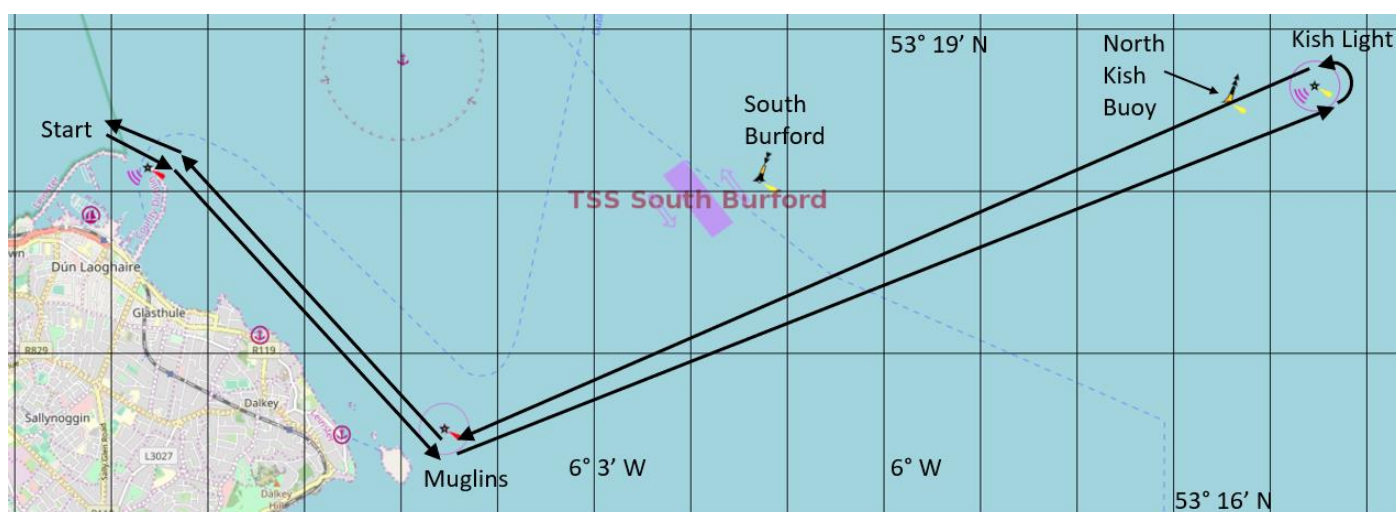


Chart from openseamap.org

Appendix B – Alternative Marks – other letters

The mark in use will be signalled by the display of a letter board on the DBSC hut and may also be announced on VHF Channel 68. The course will be from the start to the indicated mark, round the mark to port, and return to the finish.

Letter	Name and details	Latitude	Longitude	Distance to mark
M	Muglins island, lighthouse	53° 16.524' N	6° 04.579' W	2.8 NM
V	Shanganagh outfall buoy	53° 14.90' N	6° 05.15' W	4.3 NM
B	Bray outfall buoy	53° 13.24' N	6° 04.50' W	5.9 NM

Navigation Notes

The Muglins coordinates are for the lighthouse – not to be used as a waypoint! There are hazards in the sound between the Muglins and Dalkey Island, and at the South end of the Muglins – refer to a nautical chart or keep well clear of both islands.

Having cleared the East Pier, the approximate bearing for the Muglins Sound is 135°M . The approximate bearing from the Muglins Sound to Shanganagh is 190°M , and to Bray 180°M .

Boats must pass East of Dalkey Island on the way to and from Shanganagh or Bray buoy – see SI 8.4. Passing East of the Muglins is also permitted.

The chart below shows the approximate position of the marks.



Chart from [openseamap.org](https://www.openseamap.org)