



DUN LAOGHAIRE MOTOR YACHT CLUB

West Pier
Dun Laoghaire
County Dublin



Telephone: 01-280-1371
Email: office@dmyc.ie
Web: www.dmyc.ie



DMYC Kish Race 2023

Sunday 24th September 2022

General Information & Sailing Instructions

General Information

Temporary Membership

All helms and crews competing in the race will be temporary members of the Dun Laoghaire Motor Yacht Club (DMYC) on the day of the race and will be bound by the rules of the DMYC. The DMYC reserves the right to withdraw such temporary membership.

Acknowledgements

The Flag Officers and Committee of the DMYC wish to express their gratitude for the assistance rendered by: Irish Sailing, Dublin Bay Sailing Club (DBSC, Dublin Port Company, Irish Lights and Dun Laoghaire Harbour Master, Afloat and the other Dun Laoghaire Clubs. We also acknowledge the support from Leinster Boats.

Information for Competitors

High water Dublin (North Wall) on Sunday 24th September is at 07.21 local time, height 3.24 m. The following low water is at 13.10, height 1.64 m.

Results will be posted on www.dmyc.ie

Sailing Instructions

1. Rules

1.1 This event will be governed by the Racing Rules of Sailing 2021-2024 (RRS) and any amendments thereto, the Prescriptions of Irish Sailing, the Notice of Race and these Sailing Instructions (SIs). In the event of any conflict between the Notice of race and the Sailing Instructions, the Sailing Instructions shall prevail.

1.2 Racing Rules will be changed as follows:

Rule 27.1 – designating the course;	Race Signals;
Rule 35 – time limit and scores;	Rule 32 – shortening course
Appendix A5 – scores determined by race committee.	Rule 63.1 – requirement for a hearing;

1.3 The Race Committee reserves the right to inspect any entered boat, and to cancel the entry of a boat with any unusual arrangement in hull, rig, sails, ballast, or equipment that the Race Committee considers to be a potential hazard, or an attempt to violate or circumvent the intent of this document.

2. Notices to Competitors

Notices to Competitors will be published on the DMYC web site: www.dmyc.ie

3. Changes to Sailing Instructions

Any change to the Sailing Instructions will be published before 09:00 on the day of the event, except that any change to the schedule of races will be published before 20:00 on the day before the event.



4. Signals made Ashore

4.1 Signals made ashore will be displayed from the yardarm of the DMYC. Such signals may also be announced on VHF Channel 68.

4.2 If flag AP is displayed ashore, meaning that racing is postponed, the warning signal will be made not less than 60 minutes after AP is removed. (This changes RRS Race Signals).

5. Schedule of Races, Class Flags

Racing is scheduled for Sunday 24 September 2023, with the warning signal at 10:55 local time, and the start at 11:00. There will be one race, with all boats starting together, using class flag G. Note that there is no requirement for boats to display a class flag.

6. Racing Area

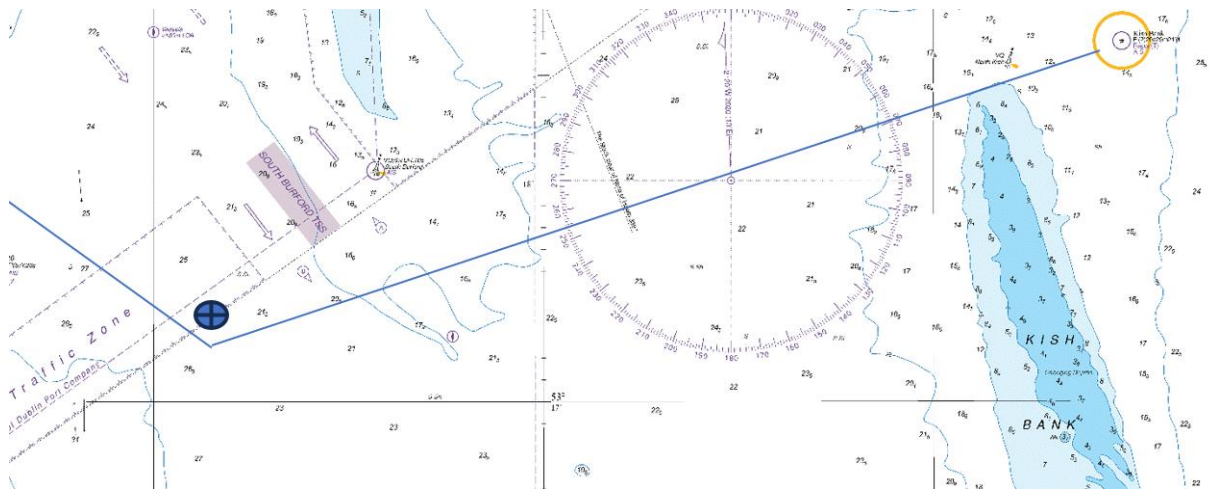
The race will take place in the vicinity of Dublin Bay, extending east to the Kish lighthouse and south into Killiney Bay. Start and finish will be at the DBSC hut, West Pier, Dun Laoghaire.

The Cruise Liner **Vasco DeGama** is due to be in the Cruise Liner anchorage from 07.00 – 22.00. All Competitors should keep clear of the launch service to and from the liner, and obey instructions from the associated guide and safety RIB's

7. Courses and Marks

7.1 The course will be from the start line to a designated mark, around that mark, rounding the mark to port, and then to the finish line. The designated mark will be the Kish lighthouse unless weather conditions require a shorter or a more sheltered course.

7.2 All competitors are to pass south of a virtual mark (or an Inflatable mark if we can hold it there) to be located at the intersection of $53^{\circ}17.0' N$ $006^{\circ}03.0' W$ on the outward and inward passage.



7.3 The mark used will be a fixed mark, either a navigation mark, an island, or a DBSC racing mark. The marks that may be used are listed in Appendix A, with corresponding identification letters. Note that these letters differ from those used by DBSC.

7.4 A letter indicating the mark in use will be displayed on the DBSC hut before the warning signal. The mark in use may also be announced on VHF, Channel 68. This changes RRS 27.1.

8. Prohibited Areas (Obstructions under RRS)

8.1 Boats shall not enter Dublin Port channel: the area bounded by the Poolbeg light, navigation buoys 6 and 4, Dublin Bay buoy, navigation buoys 1, 3 and 5 and the North Bull light.

8.2 Boats shall not enter the swimming areas at Seapoint and Sandycove marked with yellow buoys.

8.3 Boats, while racing, shall not pass between Dalkey Island and the mainland.





8.4 Boats shall not cross the start or finish line of any other race.

8.5 As per “ permission to race requirement” from Dublin Port Company “Racing is not permitted around the aids to navigation in the bay, these should not be used as course waypoint particularly B South Burford, C North Burford, T Rosbeg East. Racing must not interfere with the passage of commercial vessels to the North Burford or South Burford Traffic Separation Schemes. “

9. The Start

9.1 The start will be at the DBSC hut, on the west pier of Dun Laoghaire harbour. The start line will be defined by a transit formed by bringing in line the two shapes on top of the hut. The limit mark will be an Inflatable mark (Orange or Candy Stripe) laid off the DBSC Hut.

9.2 To start, boats shall cross the start line leaving the limit mark to port and the DBSC hut to starboard.

9.3 The start sequence will be in accordance with RRS 26.

10. The Finish

The finish will be at the DBSC hut. The finish line will be between an orange conical mark (approximately North-East of the hut) and an orange line painted on the northeast corner of the hut. Boats shall cross the finishing line leaving the orange mark to starboard and the hut to port.

11. Shortening Course

11.1 If necessary, a finish line may be laid along the rhumb line between the designated mark, or the mark references in 7.2 above, and the DBSC hut. This finish line would be between an inflatable mark and a staff on a vessel flying the DMYC burgee and flag S. The fact of the shortened course and the approximate location of the new finish line would be announced on VHF Channel 68.

11.2 If the course is shortened as in 11.1 above, the new course will be from the start to the designated mark, round that mark to port, and then to the new finish line. Boats should cross the new finish line in the direction of the rhumb line from the designated mark. This extends RRS 32.

12. Time Limit

12.1 If no boat has rounded the designated mark within 3 hours of the start, the race will be abandoned.

12.2 The time limit is 17:00. Any boat that has not finished by that time will be scored DNF without a hearing. This changes RRS 35, 63.1 and A5.

13. Commercial Traffic

13.1 The Race Committee will disqualify, without a hearing, any boat that impedes the passage of a vessel that can navigate safely only within a narrow channel or fairway, or a vessel that has limited manoeuvrability. Such disqualification may be based on observation of the Race Committee or report from the Coast Guard, vessel operator, Port Authority or other civil authority. This changes RRS 63.1 and A5.

13.2 Competing boats **shall** respect any traffic separation zones that may be intersected by the course. Any such traffic separation zone shall be crossed by the fastest route, while giving way to commercial traffic.

14. Communication

14.1 Any boat that retires from the race or that does not finish within the time limit should inform the Race Committee on VHF Channel 68. Other boats are requested to relay VHF transmissions if direct communication with the Race Committee is impossible.

14.2 Communication with Dublin Vessel Traffic Service (VTS) or with commercial vessels about their movements shall not be construed as outside assistance under RRS 41.



14.3 Dublin Port VTS are on Channel 12, or can be contacted on 01 8876070, if required.

15. Protests

15.1 Protest forms are available from the DMYC Race Office. Protests shall be delivered there as soon as possible after racing, and no later than one hour after the last boat has finished the race. The protesting boat is requested to inform the protested boat(s) as soon as possible.

15.2 Protest hearings will be scheduled by the Rear-Commodore (Sailing) of the DMYC and will be held at the DMYC as soon as possible after racing.

16. Handicapping and Prizes

16.1 Standard ECHO handicaps, or equivalent, will be used to calculate corrected times. (The race committee will assign a fair handicap to boats where necessary.)

16.2 The Kish perpetual trophy will be awarded to the boat with the lowest corrected time. Other prizes will be awarded to the three boats with the lowest corrected times.

16.3 Additional prizes may be awarded for the: first Ruffian, first Shipman and best result by a crew of two.

16.4 The Prizegiving will take place in the DMYC at Approx 1800 hrs on the day of the Race.

17. Disclaimer of Liability

Sailing is an activity that has an inherent risk of damage and injury. Competitors in these races are participating entirely at their own risk. See RRS 4, Decision to Race. Dun Laoghaire Motor Yacht Club (DMYC), Dublin Port Company, Dun Laoghaire Harbour Company will not be responsible for damage to any boat or other property, nor for injury to any competitor, including death, sustained as a result of participation in this event. By participating in this event, each competitor agrees to release DMYC from any and all liability associated with such participation to the fullest extent permitted by law.

18. Insurance

Each participating boat shall be insured with valid third party liability insurance, with minimum cover €3.0 million.

19. Safety

(a) A personal flotation device (PFD) shall be worn by all crew members on competing boats. A lifejacket of at least 50 N buoyancy is recommended.

(b) All Competitors should have a working VHF for Safety and Racing Purposes. (VHF CH 68)

c. Competitors will carry and Anchor and Towing Rope.

d. Basic First Aid Kit.

Please See Emergency Numbers Below:

Name	VHF	Tel Number
Coastguard		01 6620922
Dun Laoghaire Harbour		01 2801130
RNLI		01 2802667
Dun Laoghaire Marina		01 2020040





Dun Laoghaire Motor Y.C	Ch 68	01 2801371
VTS (Dublin Port)	Ch 12	018876070



Appendix A – Marks

A.1 Marks of Significance

Note that some mark identification letters differ from those used by DBSC.

Letter	Name and details	Latitude	Longitude
G	New Ross, DBSC mark	53° 19.60' N	6° 06.30' W
K	Kish, lighthouse	53° 18.64' N	5° 55.48' W
M	Muglins, lighthouse, island	53° 16.52' N	6° 04.58' W
P	Poldy, DBSC mark	53° 17.82' N	6° 05.40' W
R	Bulloch, DBSC mark	53° 17.28' N	6° 06.16' W
V	Shanganagh, outfall buoy	53° 14.90' N	6° 05.15' W